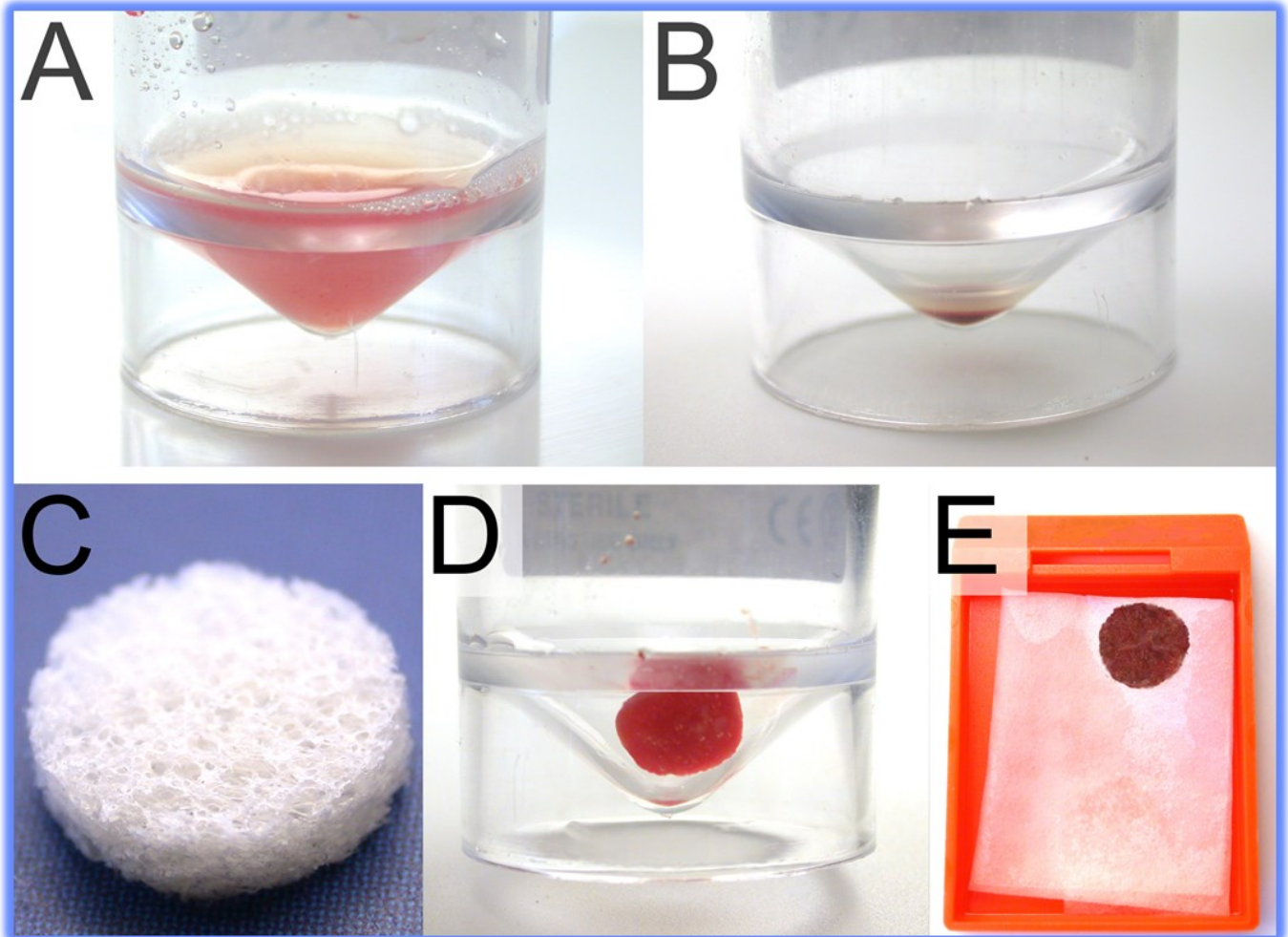


CytoFoam[®]

DISK

'Make cell blocks from cytology fluid specimens:' 'Process Sequence'



- A: Residual cytology fluid sample after material has been taken for smear preparation.
- B: The sample is centrifuged and the supernatant is removed.
- C: A CytoFoam Disk.
- D: The CytoFoam Disk absorbs the fluid to form a solid sample.
- E: After a brief (approximately 30 seconds) treatment with industrial methylated spirits and at least 6 hours of formalin fixation, the CytoFoam Disk is wrapped in processing paper and paraffin processed, as for a routine biopsy specimen. Local laboratory fixation protocols may be used provided that they have been validated.

Refer to the user instructions for full details



Exmoor Innovations Ltd

Lisieux Way, Taunton, TA1 2LB, UK
T 44 (0) 1823 354307 F 44 (0) 1823 354035
E sales@exmoorinnovations.com
www.exmoorinnovations.com

better diagnosis by design